

EAGLE

POLY BURLAP CONCRETE BLANKET

PB SERIES



WET CURE BLANKET POLY COATED BURLAP

- 10 oz. burlap laminated onto 5 mil white coated polyethylene film
- 10' x 100'
- Wet cure method for concrete curing
- Meets ASTM C-171 specification for concrete curing
- Jute burlap provides moisture absorption
- White coated poly reflects sunlight & heat rays controlling the moisture for better curing



BURLAP SIDE

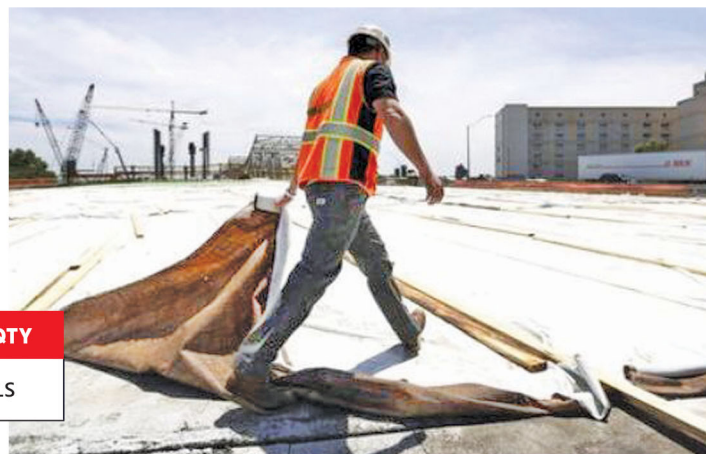


POLY SIDE



APPLICATIONS & BENEFITS

- Provides a smoother, harder concrete finish to concrete surfaces
- Quality lamination between the two fabrics
- Material is flexible and easy to handle
- Meets DOT requirements for concrete curing
- Helps keep freshly poured concrete from cracking
- Highways, roads, bridges, & overpasses
- Retaining walls & concrete columns



PB SERIES

ROLL SIZE	LAMINATED FABRIC	SPECIFICATIONS	ITEM #	PALLET QTY
10' X 100'	10 OZ. BURLAP JUTE 5 MIL WHITE POLY	ASTM C-171	PB-10100	24 ROLLS

Poly Burlap Installation Tips

1. Before starting, confirm the curing time and any specific instructions with a site engineer.
2. Ensure both the concrete and the burlap side of the blanket are adequately wet before applying the blanket.
3. Place the burlap side of the curing blanket down on the concrete, with the poly side facing up.
4. Re-wet the blanket as needed, typically every 1-2 days or as an engineer advises, to ensure proper curing.
5. After use, allow the burlap side to dry in the sun before rerolling for easy storage and future use.



Please note: These instructions are provided as a general guide and may not be applicable to all projects. Always consult a licensed engineer for specific recommendations. Eagle is not liable for improper use or installation.